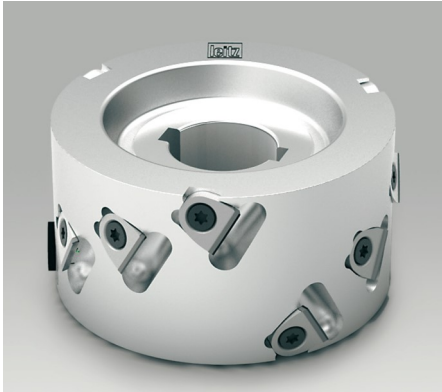


# WhisperCut Promotion

February 2017



## Application:

For pre-milling in preparation for edgebanding.

## Machine:

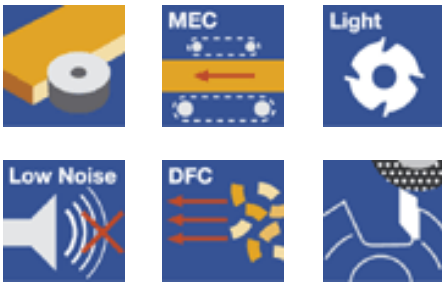
Edgebanders.

## Workpiece material:

Particle and fiber materials (MDF) uncoated, veneered, plastic and paper coated, fiber reinforced plastics (glass or carbon fiber reinforced plastics).

## Technical information:

Alternate shear for exceptional finish on double-sided laminates.



## Advantages / Benefits

### WhisperCut

- Light-weight aluminum body jumps softly in and out of the cut; reduces spindle wear and is much quieter than steel body tools
- Diamond (PCD) tipped carbide knife modules can be changed on location
- Replacement knives immediately available from domestic stock
- Precision knife seats and Torx clamping ensure exact knife location and optimal cut quality
- Knives can be returned to Leitz service center for sharpening (2x)
- Much less expensive than PCD tipped heads; need for expensive, redundant replacement heads is eliminated

### WhisperCut Plus

- Taller PCD tips yield ~8 sharpening cycles
- Even more economic than standard WhisperCut due to larger re-sharpenable area
- Machine spindle must have at least 5mm of horizontal travel/adjustment

### WhisperCut EdgeExpert

- High shear tip design greatly reduces cutting pressure, optimizing cut quality and tool service life
- High shear geometry transforms the cutting process from chiseling to gentle slicing and shearing action
- Delicately processes difficult laminates and loose core material
- Eliminates core plucking and laminate chipping
- Knives offer exponentially longer service life than standard shear WhisperCut design



**Technical Specifications**

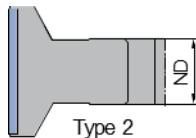
Machine	WhisperCut										EdgeExpert*
	D mm	CL mm	Type	Wings	ID# LH	ID# RH	Promo Price	Total Knives	ID# Knives	Promo Price	Promo Price
Biesse	80	45	1 S	2x4	192127	192127	\$467	8x	91066	\$40	\$908
Biesse	80	65	2 S	2x6	192128	192128	\$615	12x	91066	\$40	\$1,047
Biesse	100	43	4 S	3x4	192088	192088	\$615	12x	91052	\$40	\$960
Biesse	100	65	1 S	3x6	192089	192089	\$811	18x	91052	\$40	\$1,365
Brandt	100	43.6	3 AS	3x4	90885	90886	\$615	12x	91052	\$40	\$1,151
Brandt	100	65.2	3 AS	3x6	90887	90888	\$811	18x	91052	\$40	\$1,365
Brandt	100	85	3 AS	3x8	90889	90890	\$1,066	24x	91052	\$40	\$1,579
Brandt	100	105	3 AS	3x10	90891	90892	\$1,473	30x	91052	\$40	\$2,799
Brandt	100	43.6	3 AS	2x4	192211	192212	\$467	8x	91052	\$40	\$833
Cehisa	100	54	2 AS	2x5	192078	192079	\$533	10x	91052	\$40	\$908
Hebrock, EBM	70	43	4 AS	2x4	192237	192238	\$467	8x	91066	\$40	\$769
Hebrock, EBM	100	43	4 AS	2x4	192080	192081	\$467	8x	91052	\$40	\$769
Holz-Her	100	63	2 S	3x6	192147	192148	\$811	18x	91066	\$40	\$1,365
Homag, Biesse	125	43	2 S	3x4	75627	75627	\$615	12x	91074	\$40	\$960
Homag, Biesse	125	63	2 S	3x6	75626	75626	\$811	18x	91074	\$40	\$1,365
IMA	100	32	1 AS	3x4	192090	192091	\$615	12x	91077	\$40	\$852
IMA	125	32	1 AS	3x4	192092	192093	\$615	12x	91071	\$40	\$947
IMA	125	43	2 AS	3x5	192094	192095	\$711	15x	91071	\$40	\$960
IMA	125	63	3 AS	3x7	192096	192097	\$918	21x	91071	\$40	\$1,365
IMA Advantage	125	43	4 AS	3x5	192098	192099	\$701	15x	91071	\$40	\$960
IMA Advantage	125	65	4 AS	3x7	192100	192101	\$918	21x	91071	\$40	\$1,365
Ott	85	48	3 AS°	3x5	192209	192210	\$711	12x	91066	\$40	\$1,066
								3+3	91067L / 68R	\$34	
Ott	85	65	2 AS	3x6	192227	192228	\$811	18x	91066	\$40	\$1,365
Ott	85	85	3 AS	3x8	192229	192230	\$1,197	24x	91066	\$40	\$1,579
Stefani, Holz-Her	100	43	2 AS	2x4	192082	192083	\$467	8x	91052	\$40	\$769
Stefani, Holz-Her	100	65	2 AS	2x6	192084	192085	\$615	12x	91052	\$40	\$1,047
SCM/Stefani	100	51	4 AS*	2x6	192215	192216	\$615	8x	91066	\$40	\$908
								2+2	91067 / 68	\$34	
SCM/Stefani	100	66	4 AS°	2x7	192213	192214	\$674	12x	91066	\$40	\$1,047
								2+2	91067L / 68R	\$34	
SCM/Stefani	100	51	4 AS*	3x6	192217	192218	\$811	12x	91066	\$40	\$1,162
								3+3	91067 / 68	\$34	
SCM/Stefani	100	66	4 AS°	3x7	192219	192220	\$918	18x	91066	\$40	\$1,365
								3+3	91067L / 68R	\$34	

\*EdgeExpert knives: ID #91053; \$60 each

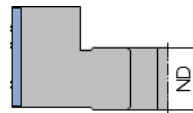
**Tool Body Configuration**



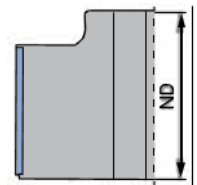
Type 1



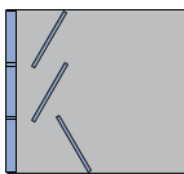
Type 2



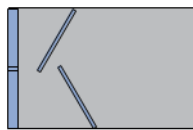
Type 3



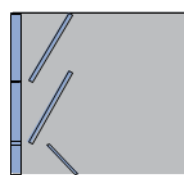
Type 4



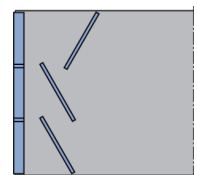
Type AS = asymmetric tip arrangement



Type S = symmetric tip arrangement



Type AS° = asymmetric tip arrangement with a narrow row of teeth below



Type AS\* = asymmetric tip arrangement with a narrow row of teeth below and bottom