

leitz

Bevel cutterhead, swivelling

Variable bevel angle in all working materials



Perfect cutting results in different materials

Whether industrial or handcrafted production, joining and beveling with different bevel angles always represents one of the central challenges with regard to the given mechanical equipment, the diversity of materials and profiles, quality requirements and market-related flexibility.

The Leitz bevel cutterhead system offers individual advantages for every company size and thus helps to achieve a clear production and quality superiority. The system is not only flexible and sustainable, but also improves production efficiency.

YOUR BENEFITS

- Perfect cutting results
- Easy handling
- Applicable in different materials
- Significantly less noise
- Long lifetime

Your benefits due to ...



FLEXIBILITY

Bevel cutterhead, swivelling – variable in use

- Suitable for various materials from solid wood to wood derived materials and plastics
- Can be used on machines for manual feed, throughfeed machines and CNC machining centres



EFFICIENCY

Bevel cutterhead, swivelling – economical in every respect

- Perfect cutting results and long lifetime due to optimized cutting materials
- High cutting speed through smart tool design
- No reworking required due to extremely sharp cutting edges
- Fast and easy knife change without setting gauges



SUSTAINABILITY

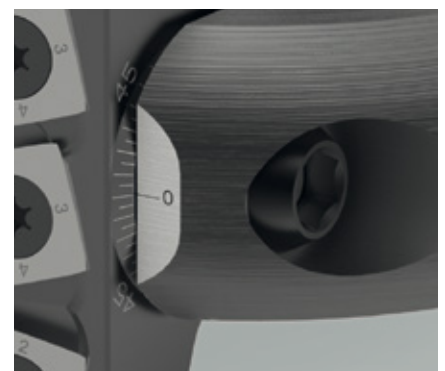
Bevel cutterhead, swivelling – a benefit for user and environment

- Long lifetime and thus less tool costs thanks to steel tool body and hardened clamping elements
- Less noise through noise-optimized design

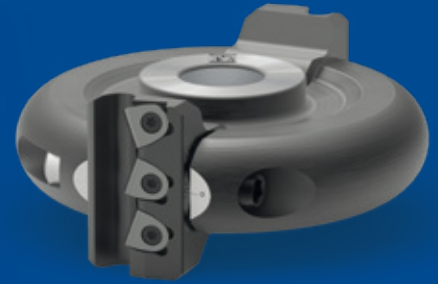
Application recommendation

| Working material | Design variant | | |
|--------------------------------------|----------------|---------|------------|
| | Turnblade | HeliCut | WhisperCut |
| Softwood | ● | ● | |
| Hardwood | ● | ● | ○ |
| Gluelam | ○ | ● | ○ |
| MDF | ○ | ○ | ● |
| Coated chipboard | ○ | ○ | ● |
| Thermoplastic working materials | | ● | |
| Technical foams (XPS, EPS, PU, ...) | | ● | |
| Fibre reinforced plastics (GFK, CFK) | | | ● |

● suitable ○ conditionally suitable



Stepless angle adjustment $\pm 60^\circ$
with locking positions in 15° steps



Turnblade knife system

When it comes to a cutting result in different wood and wood derived materials that is free of marks.

AT A GLANCE

- Standard turnblade WP 12
- Free of marks cutting result due to 1-part, continuous cutting edge
- Cutting width of 50 mm = at 45° maximal workpiece thickness 34 mm
- Suitable for CNC machining centres, moulders (MAN) and continuous machines (MEC)
- Applicable in many wood and wood derived materials
- Standard: Available ex stock
Semi-Standard: Available at short notice
- Tungsten carbide turnblades

HeliCut knife system

Particularly good cutting in solid wood and “soft” working material.

AT A GLANCE

- 4 times turnable knives
- Workpiece edges tear-free on both sides due to alternating shear angles
- Partial change of cutting edges in case of local wear or damage
- “Aggressive” cutting edge geometry
- Cutting edge 55 mm = at 45° maximal workpiece thickness 38 mm
- Suitable for CNC machining centres, moulders (MAN) and continuous machines (MEC)
- Preferably applicable in solid wood and “soft” working materials such as softwood, foams, etc.
- Standard: Available ex stock
Semi-Standard: Available at short notice
- Tungsten carbide turnblades

WhisperCut knife system

Especially for machining abrasive working materials.

AT A GLANCE

- Cutting edges can be changed by the user
- Workpiece edges tear-free on both sides due to alternating shear angles
- Partial change of cutting edges in case of local wear or damage
- “Robust” cutting edge geometry
- Cutting width of 55 mm = at 45° maximal workpiece thickness 38 mm
- Suitable for CNC machining centres, moulders (MAN) and continuous machines (MEC)
- Preferably applicable in abrasive working materials such as MDF, fibre-reinforced plastics (FVK), etc.
- Standard: Available ex stock
Semi-Standard: Available at short notice
- Diamond cutting edges

Ordering information for the products shown above can be found in the Leitz Lexicon at www.leitz.org





UP TO 40 %

TIME SAVING
THROUGH NEWLY
DESIGNED ADJUSTMENT
MECHANISM

UP TO 50-fold

LIFETIME OF
WHISPERCUT VERSION
IN COMPARISON
TO TUNGSTEN
CARBIDE KNIVES

100 %

FLEXIBILITY REFERRING
THE WORKPIECE
MATERIALS

Bevel cutterhead,
swivelling:
Unrivalled easy,
flexible and safe!



www.leitz.org

