



Leitz Internal Door (I-Door) Cutterhead

**Unmatched tool longevity,
exceptional finish quality.**

Process Intelligence

Leitz Internal Door (I-Door) tooling offers a unique combination of carbide and diamond inserts used for edge processing of wood core doors with hard fiber or fiberglass skins. The combination of carbide and diamond tips yields "sand-free" finish and exceptional tool longevity. Replaceable inserts are easily

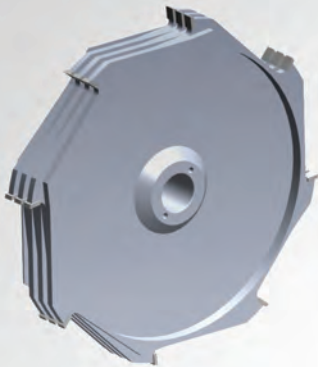
changed in-house for minimized downtime and productivity loss. The light-weight aluminum cutter body is easy on machinery, employees, and your bottom line.

For over 135 years Leitz has been a leader in the woodworking and advanced materials industries

offering the highest quality tools and finest services worldwide. Leitz state-of-the-art solutions ensure longer production runs, reduced downtime, maximized tool life, and optimized performance—while decreasing production costs. Achieve the finest results every time, without compromise.

Traditional Tooling

60 pounds • disposable
sanding required



Traditional - with sanding

NEW I-Door Cutterhead

6 pounds • lifetime
sanding not required



I-Door - without sanding

Advantages

- Outstanding tool longevity
- Exceptional finish quality without sanding
- Tight transition tolerance between carbide and diamond inserts ensures a flat edge without lines or steps
- Fast knife exchange reduces machine downtime and improves productivity
- Insert-style tool body eliminates the need for redundant carbide-tipped heads
- Dramatically reduces tool service and replacement costs
- Aluminum cutter body is easy to handle and easy on machine spindles

Leitz Locations



USA

Michigan (Corp. Headquarters)
Grand Rapids, MI 49512
p. (800) 253-6070

California
San Bernardino, CA 92408
p. (800) 548-1535

North Carolina
Archdale, NC 27263
p. (800) 860-8848

Texas
Garland, TX 75041
p. (800) 743-2468

Washington
Kent, WA 98031
p. (253) 395-1012

Leitz Tooling Systems LP
North American Headquarters
4301 East Paris Avenue SE
Grand Rapids, MI 49512
Phone 800-253-6070
Fax 800-752-9391
contact@leitz.org
www.leitztooling.com

