



Locking torques
Leitz cutting systems

Planing and profiling

HeliPlan



M5, T20 = 5 Nm



VariPlan, VariPlan Plus



VariPlan:
M8, ISK 5.0 = 15 Nm



VariPlan Plus:
M8, ISK 5.0 = 12 Nm

**Planerhead
wedge-type system**



Aluminium tool body:
M10x1, ISK 5.0 = 18 Nm



Steel tool body:
M10x1, ISK 5.0 = 25 Nm

**Hydro planerhead
RotaPlan**



Aluminium tool body:
M10x1, ISK 5.0 = 18 Nm



Steel tool body:
M10x1, ISK 5.0 = 25 Nm

**Profile and planer head with
HSK 85 WS adaptor or hydro
clamping, PowerKnife system**



M10x1, ISK 5.0 = 25 Nm



**Minifinger cutterhead
with changeable knives**



M10, ISK 5.0 = 17 Nm



Planing and profiling

**Minifinger cutterhead
with turnblade knives**



M6, T20 = 6 Nm



**Minifinger cutterhead
TurboHawk**

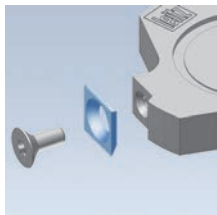


M8, ISK 6.0 = 20 Nm



Jointing, rebating and bevelling

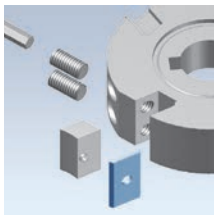
Turnblade knife
jointing cutterheads



M5, T20 = 6 Nm



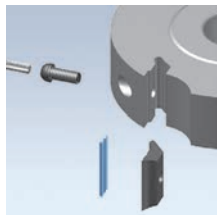
Turnblade knife 12 mm



M5, ISK 2.5 = 4 Nm
M6, ISK 3.0 = 5 Nm
M8, ISK 4.0 = 6 Nm



Turnblade knife 8 mm



M5, T15 = 5.5 Nm
M6, T25 = 14 Nm



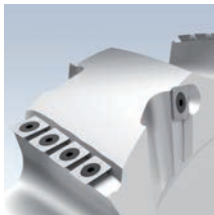
Turnblade knife 4.1 / 5.5 mm



M2.5, T8 = 1.5 Nm
M3, T8 = 2 Nm
M4, T15 = 3 Nm



HeliCut



M5, T20 = 5 Nm



Diamaster WhisperCut

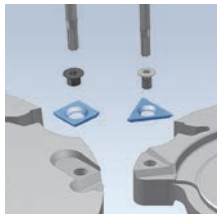


M5, T20 = 7 Nm



Jointing, rebating and bevelling

Spur

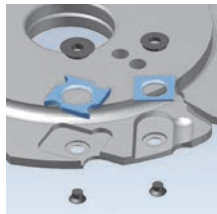


Aluminium tool body:
M5, T20 = 6 Nm



Steel tool body:
M6, T20 = 6 Nm

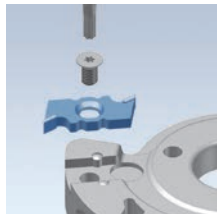
Lamello turnblade knife
and spur



M4x0.5, T9 = 2 Nm



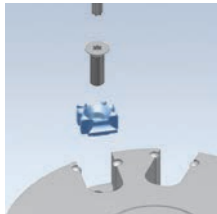
Grooving knife,
rhomboid turnblade knife



M6, T20 = 6 Nm
M6, T20 = 6 Nm
M6, T25 = 14 Nm
M12, ISK 6.0 = 14 Nm



Edging knife



M6, T20 = 6 Nm



Variangel bevel cutterhead



M6, ISK 3.0 = 5 Nm
M8, ISK 8.0 = 20 Nm



Profile tool systems

**ProfilCut Q,
ProfilCut Q Premium,
ProfilCut, ProfilCut Plus**



M5, T15 = 5.5 Nm
M6, T25 = 14 Nm



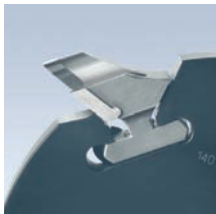
**ProfilCut Q Diamond,
ProfilCut Q PLUS**



M5, T15 = 5.5 Nm
M6, T25 = 14 Nm



**ProFix-Plus, ProFix F,
ProFix C**



M5, ISK 2.5 = 2.5 Nm
M6, ISK 3.0 = 5 Nm
M6, ISK 4.0 = 5 Nm
M8, ISK 4.0 = 10 Nm



VariForm



M5, T25 = 6 Nm
M10, ISK 5.0 = 15 Nm



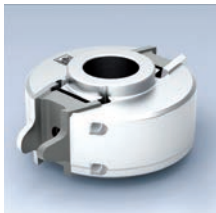
FinCut



M5, ISK 2.5 = 4 Nm
M8, ISK 4.0 = 12 Nm



**Multi purpose
profile cutterhead**



M10, ISK 5.0 = 15 Nm
M16, SW 17 = 15 Nm



Other

Screwed sets with bore,
standard and hydro sleeve



M6, ISK 5.0 = 9 Nm



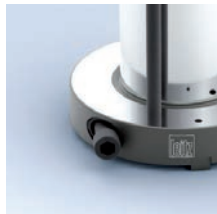
Screwed sets with
cutter arbors



M5, ISK 4.0 = 6 Nm
M8, ISK 6.0 = 14 Nm
M10, ISK 6.0 = 30 Nm
M16, ISK 10/14 = 65 Nm



Activation clamping system
hydro sleeve



M8x1, ISK 6.0 = 10 Nm



Hogger on sleeve



M8, ISK 6.0 = 14 Nm



Sawblade on hogger



M6, T20 = 6 Nm





Leitz GmbH & Co. KG
Leitzstraße 2
73447 Oberkochen, Germany
Tel. +49 7364 950-0
Fax +49 7364 950-662
leitz@leitz.org
www.leitz.org

Leitz GmbH & Co. KG
Leitzstraße 80
4752 Riedau, Austria
Tel. +43 7764 8200-0
Fax +43 7764 8200-111
office.riedau@rie.leitz.org
www.leitz.at